

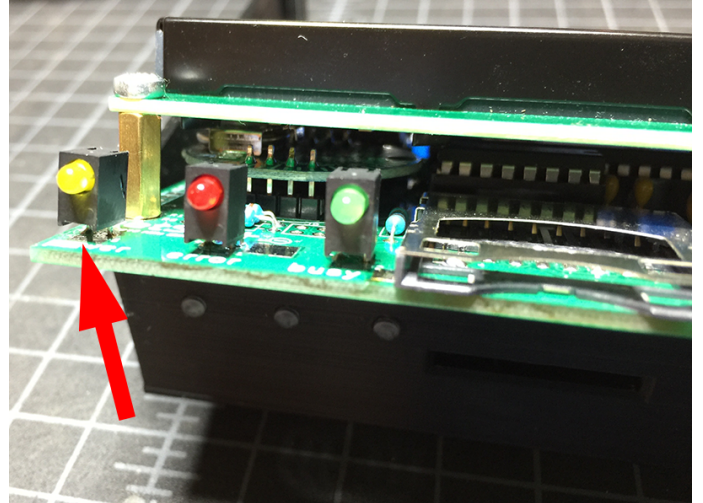
# petSD+ V2 3D Printed Case

## Assembly Instructions

### 1. LEDs

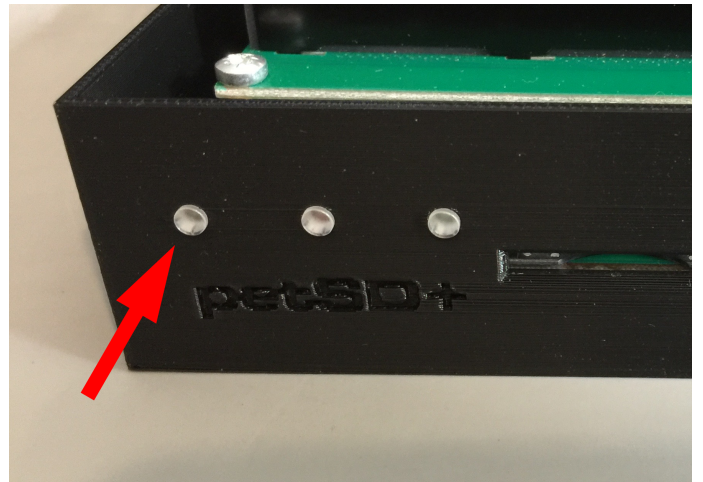
Replace the existing LEDs in the petSD+ V2 PCB, with the right-angle ones provided with the case kit.

Solder them in leaving approximately 1/16" (1.66mm) of spacing between the PCB and the base of the new LEDs. This spacing is needed so the LEDs align with the light pipes.



### 2. Light Pipes

Insert the three light pipes, pressing them in tightly, into the three small openings located in the front-left side of the case bottom.

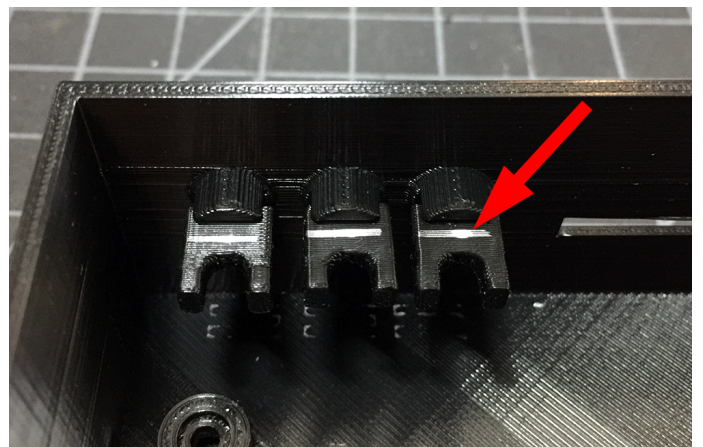


### 3. Button Extensions

Insert each of the three button extensions into the button holes on the front-right side of the case bottom, with the silver line marking facing up.

Do this from the inside of the case bottom.

Make sure they move freely in and out.

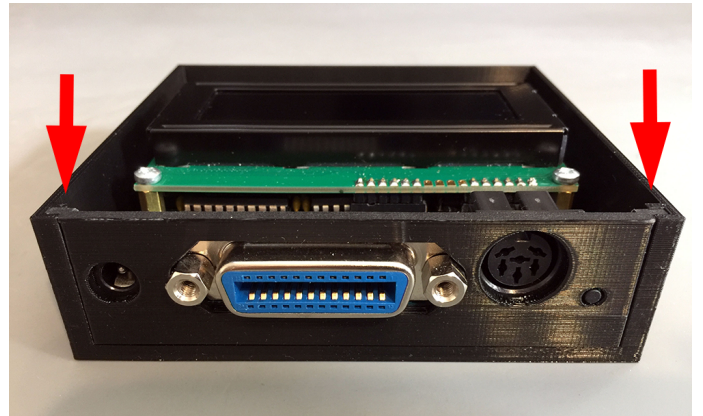
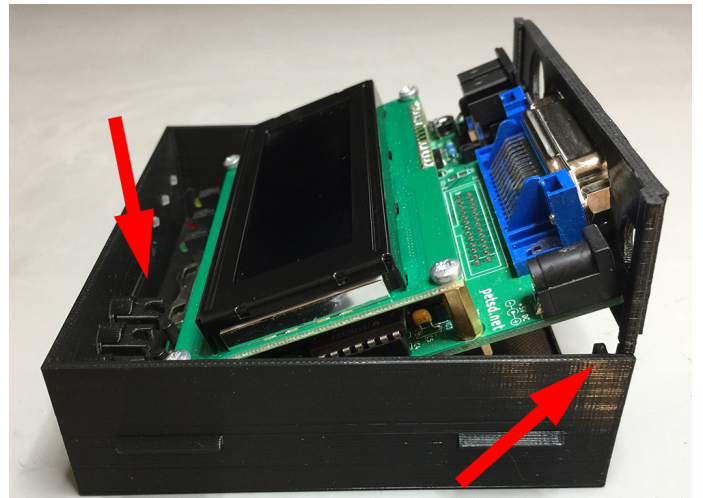


## 4. PCB + Back Plate

Loosely place the back plate on the rear of the PCB. Then position the PCB, with the back plate on, into the case bottom in a slanted orientation (with the front down and the rear up).

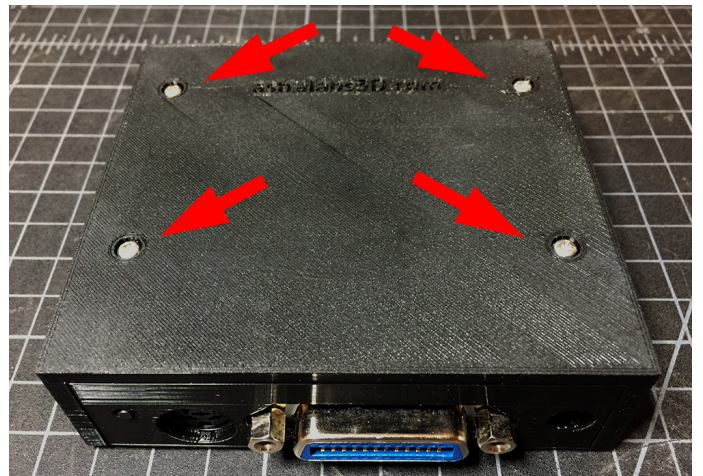
Make sure that the push-button switches on the PCB align with the button extensions on the case.

With the PCB in this position, insert the back plate into the slots on the case bottom, and push down until the PCB is seated horizontally and the top of the back plate is flush with top edge of the case.



## 5. Screws

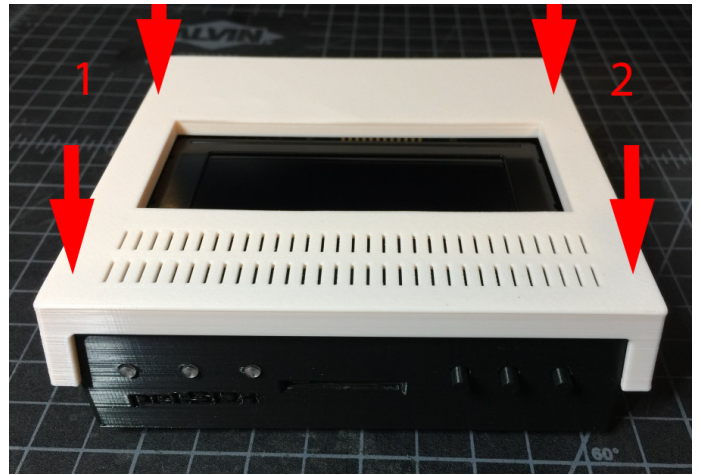
Use the provided screws to secure the PCB to the case bottom.



## 6. Case Top

Place the case top on top of the PCB and bottom piece, with the grill towards the front (aligning the LCD opening with the LCD on the PCB).

Then press down on the case top carefully, **one side at a time**, until both sides snap into place, past the securing tabs on the sides of the case bottom.



## 7. Rubber Feet

Place a rubber foot on each corner of the case bottom.

