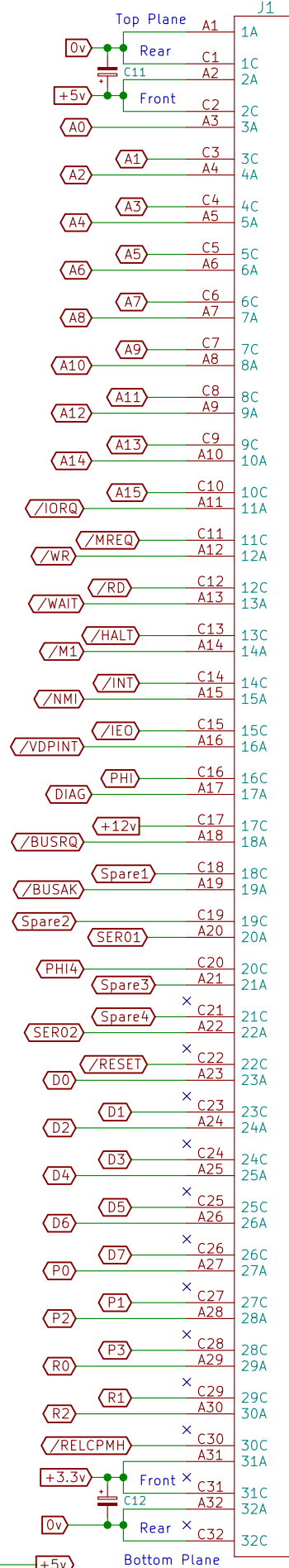
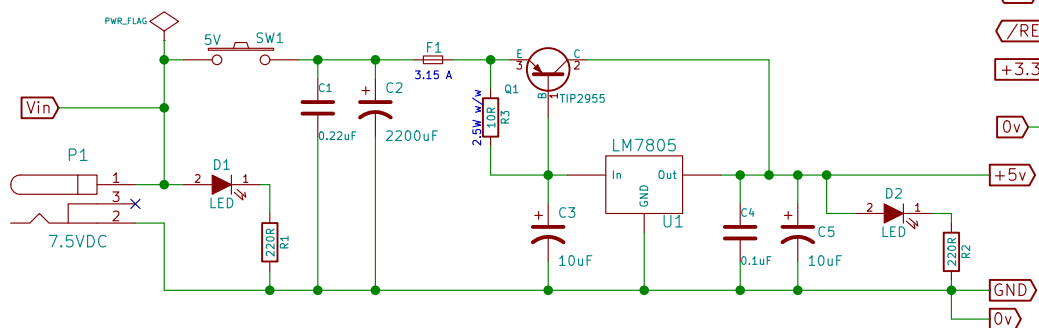
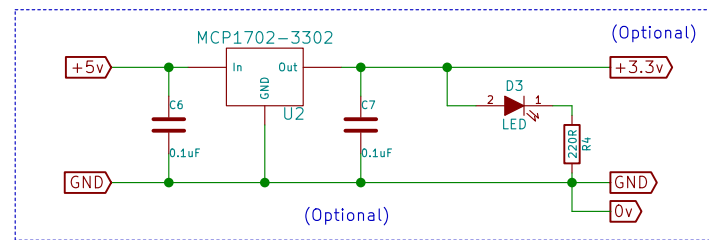
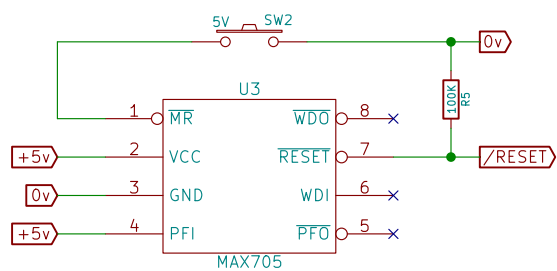
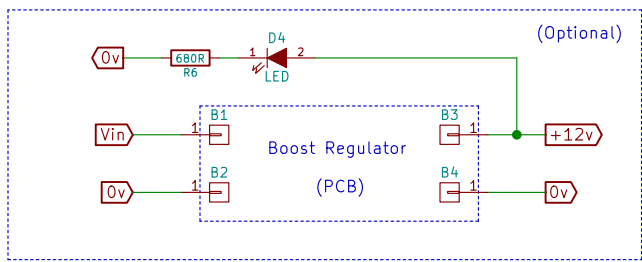


Revision History

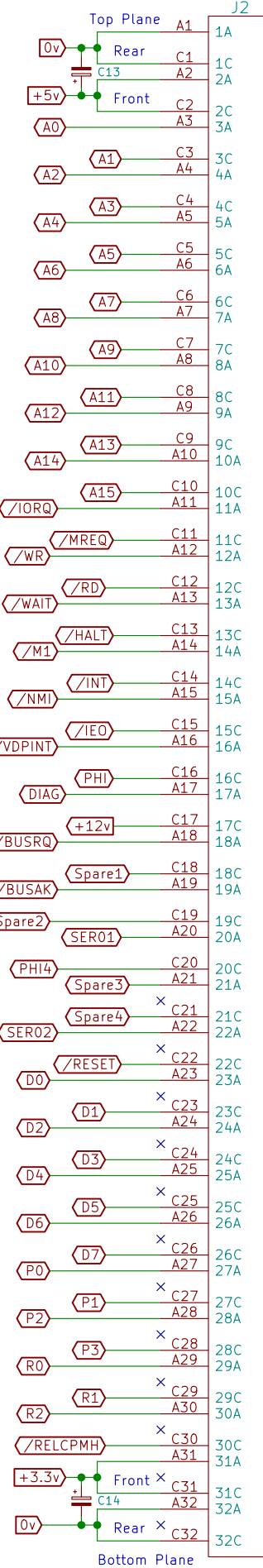
1.12 01/08/2016 Added Boost Regulator PCB
 1.11 25/05/2016 Added global reset circuit (MAX705) to backplane
 1.10 24/05/2016 Redrawn for custom backplane PCB

1.02 Removed PHI8 (C18)
 Changed all signal directions to BiDir (cosmetic change only)
 (From a bus perspective, signals can be to or from the bus)

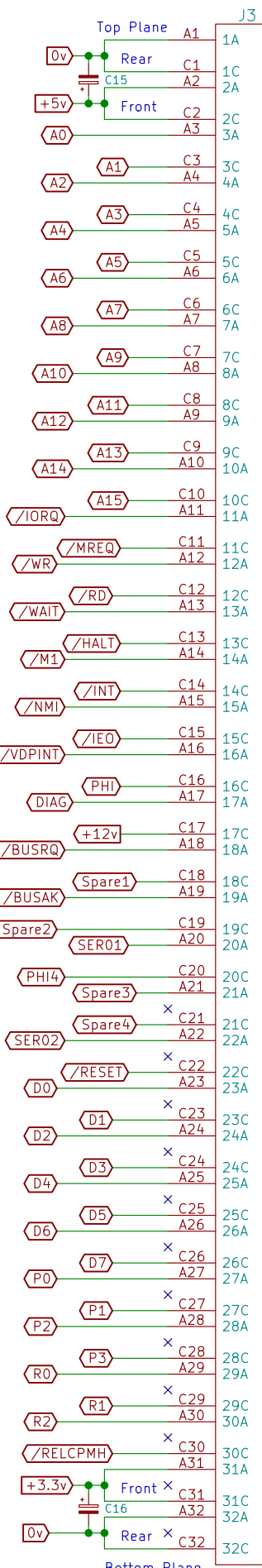
1.01 Added DIAG signal (A17) to bus (for Diagnostic board latch control)
 1.0 Revision Number Change Only, 25-Sep-2014
 0.3 Design Freeze, 21-Mar-2014
 - Design Development
 - Draft



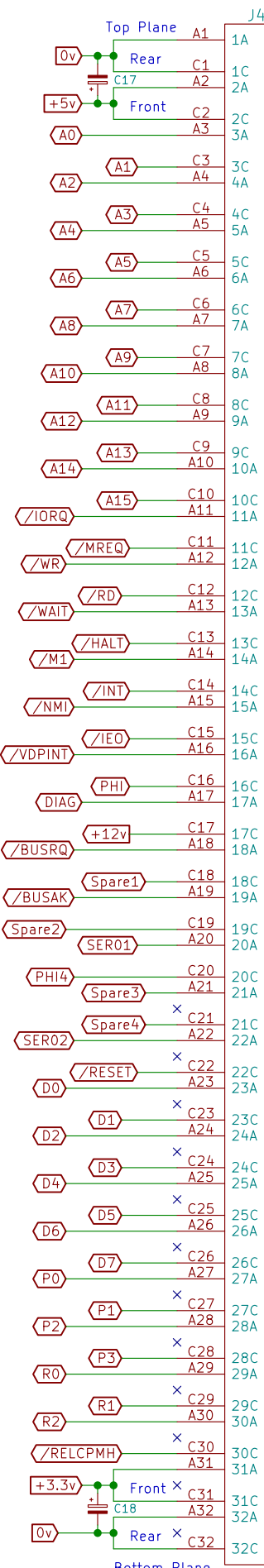
C96ABC_MTXP



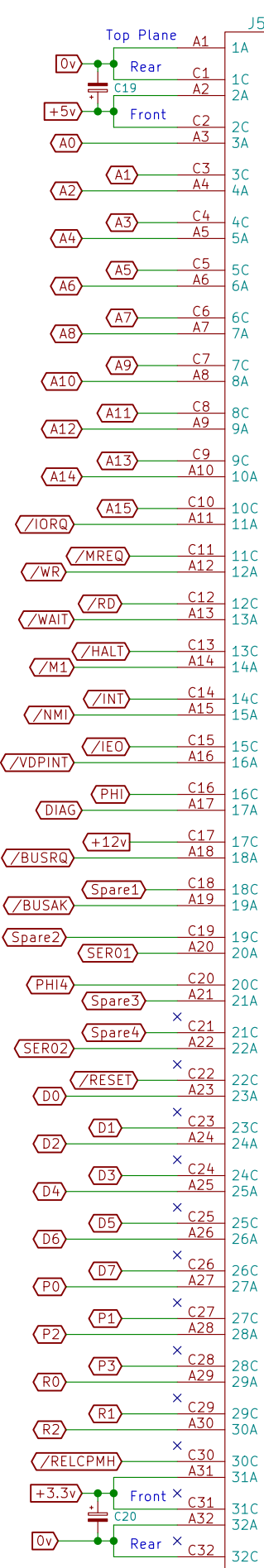
C96ABC_MTXP



C96ABC_MTXP



C96ABC_MTXP



C96ABC_MTXP